



# CEM

Centre for Evaluation & Monitoring

## Fair access to Grammar Schools, linking NPD to 11+ data.

Helen Wareham, John Little, Andy Wiggins,  
Sue Stothard & Lee Copping



Durham  
University

# Aims of the project

- Exploratory project focused upon two local authorities in England.
- Link 11+ data held by CEM to NPD data, specifically KS2 attainment.
- Investigate patterns around pupils taking, or not taking, the 11+ entrance test, and pupils who have received free school meals (FSM ever6).

# 11+ and KS2 data

- Data was merged with a high success rate, on average 91%.
  - First name, last name, date of birth, and sex.
  - Partial characters, i.e. first two letters of last name.
- Main reason matches weren't made:
  - Independent schools
  - Out of district
  - Generic information provided

# 11+ and KS2 data – baseline findings

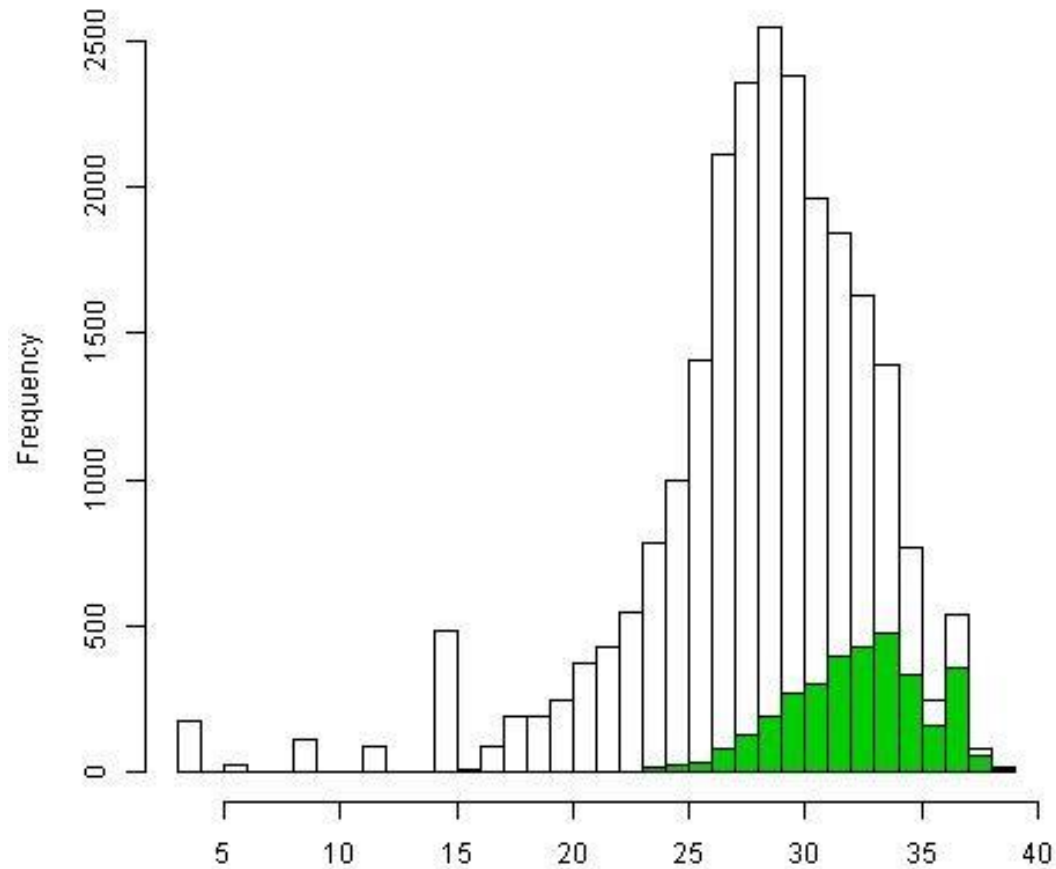
- Distribution of applicants
  - Large distance between recorded home address and location 11+ was taken.
  - Numbers of ‘out of district’ pupils taking the 11+
  - Evidence of pupils sitting more than one test, between the two LEAs there was around a 5% overlap.
  - Discrepancies in registered primary school between sitting 11+ and KS2.

# 11+ and KS2 data – baseline findings

- Regional variations.
  - Certain pupil demographics were found to increase the likelihood of a pupil sitting an 11+ entrance test but this was not consistent between the LEAs.
- Number of high attaining pupils, based on KS2 attainment, not taking the 11+.
  - A number of these were FSM pupils.

# 11+ and KS2 data – baseline findings

KS2 Results



# FSM pupils and the 11+

- As with previous research we found pupil who have received, or are receiving, FSM perform lower at KS2 compared to non-FSM pupils.
- A pupil who has received, or is receiving, FSM is less likely to take an 11+ entrance test.
- FSM and IDACI had similar effects in predicting the likelihood of a pupil sitting the 11+
  - Just over 10% of one of the cohorts had missing data for IDACI

# After the 11+ - Secondary School destinations

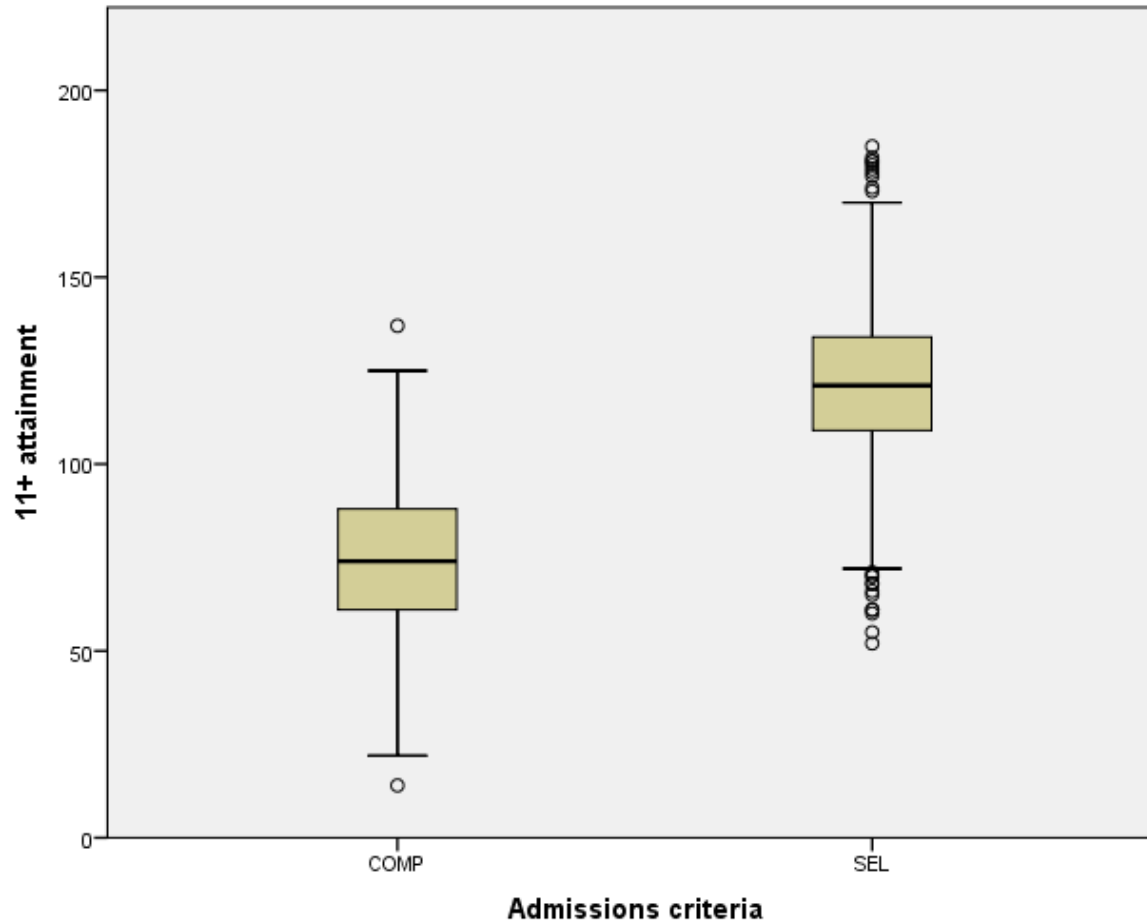
- Lots of working with LEAs
  - Opportunistic data
  - Publically available data
- NPD destination data for the two LEAs
  - Unable to match 40%
- Of those matched 39.2% went to a selective school, with the remainder going to a comprehensive.



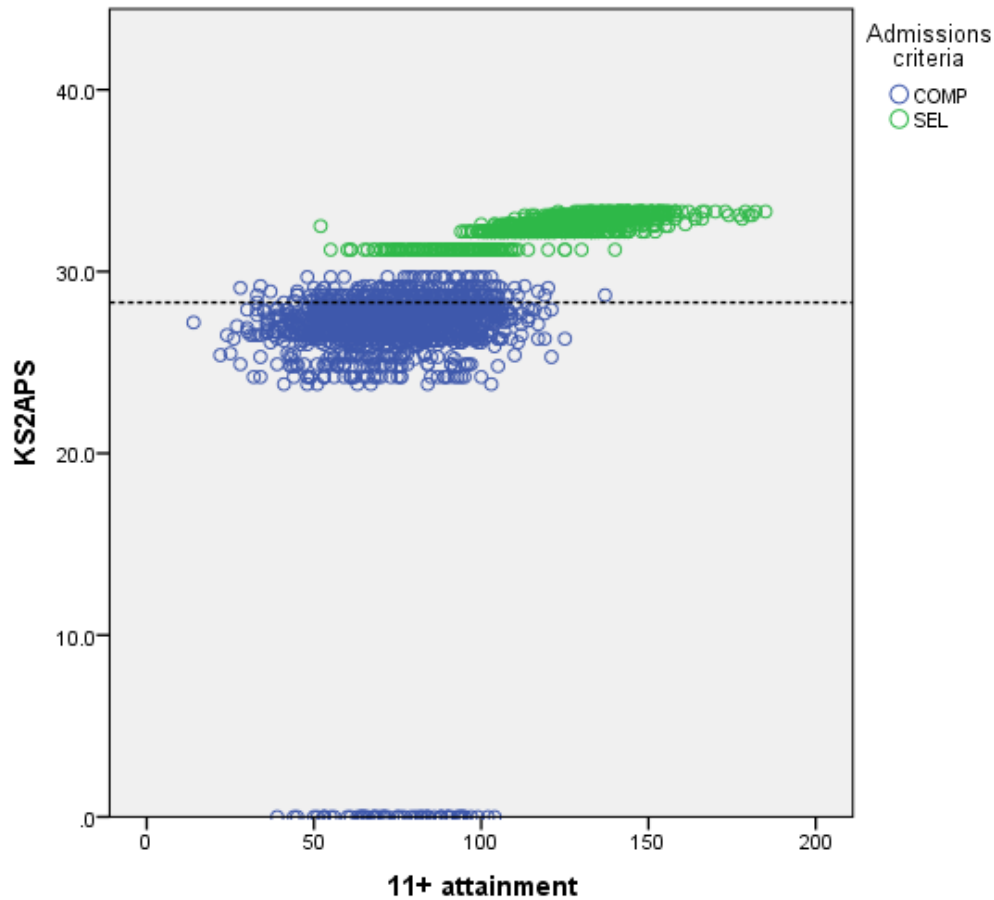
# After the 11+ - Secondary School destinations

- As expected those who performed highly on the 11+ generally went on to a selective Secondary School.
- There is some indication that those who do not get offered or choose to apply to a grammar/selective school are still potentially selecting 'good' comprehensives in their LEA, further investigation needed.

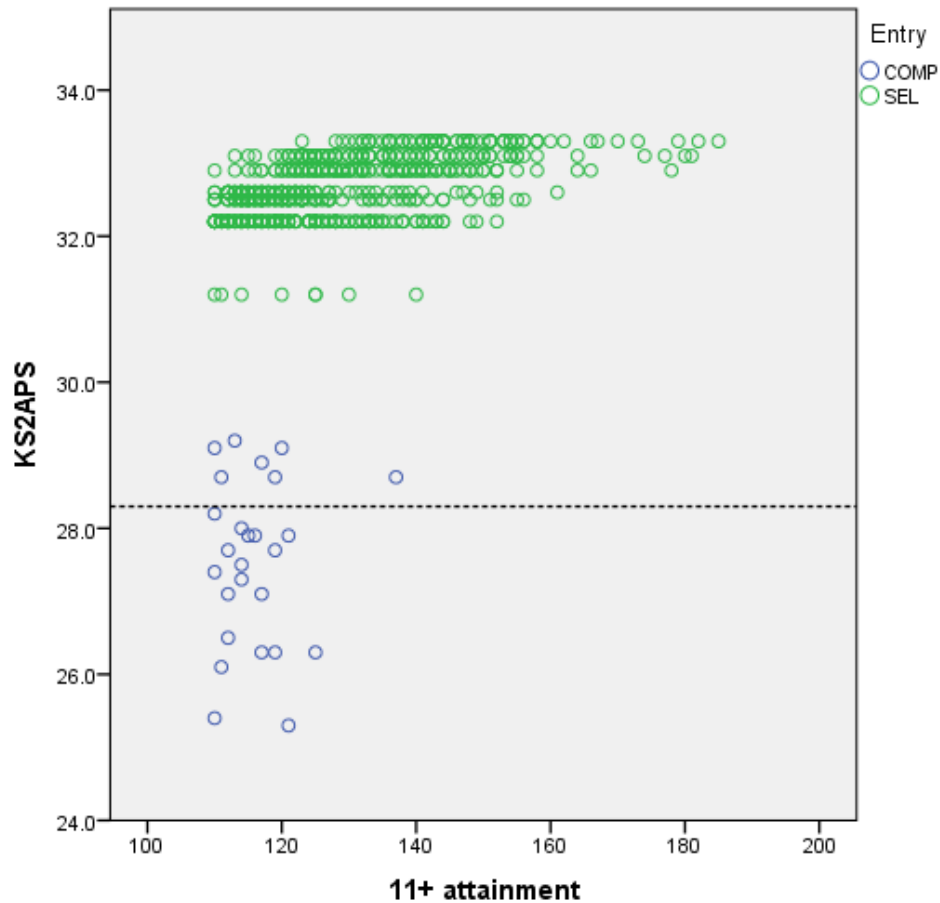
# After the 11+ - Secondary School destinations



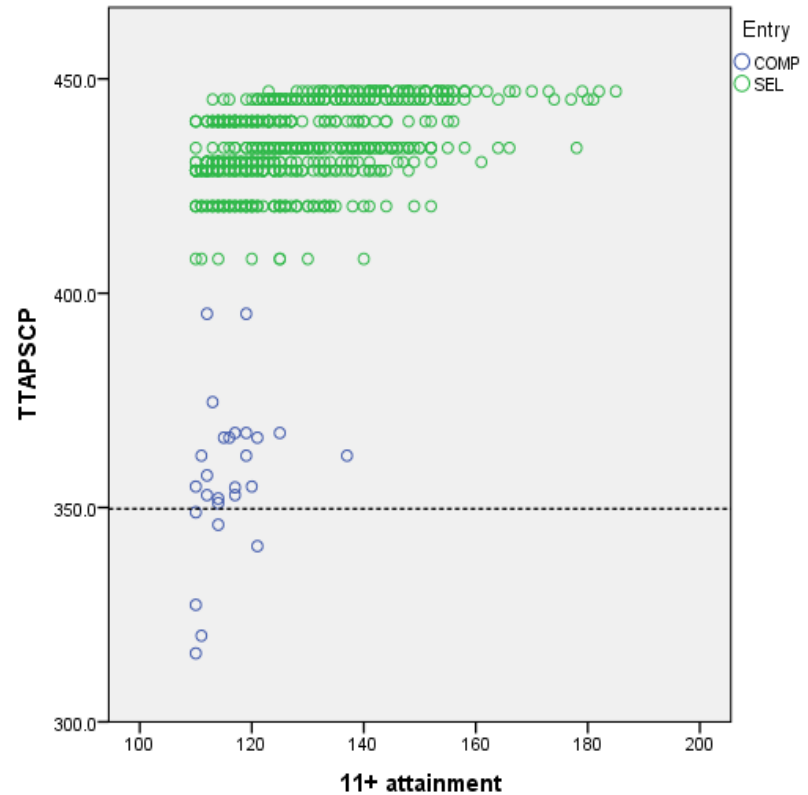
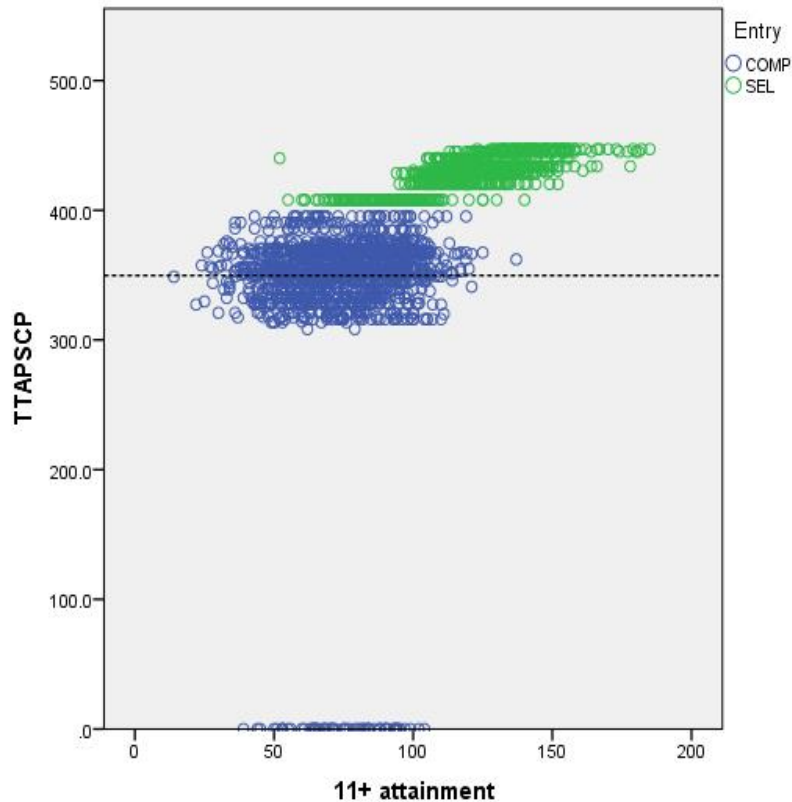
# After the 11+ - Secondary School destinations



# After the 11+ - Secondary School destinations



# After the 11+ - Secondary School destinations



# Conclusions/future directions

- Some answers but more questions
- Parental decisions
- Outreach work
  - Priorities
  - Flexible offers/support
- Monitoring and tracking