



Wills Memorial Building

University of Bristol, Queens Road, Bristol, City of Bristol, BS8 1RJ

0117 954 5219 (tel:0117 954 5219)

Send email (<mailto:conference-office@bristol.ac.uk>; earth-enquiries@bristol.ac.uk; law-ug-office@bristol.ac.uk)

Visit website (<http://www.bristol.ac.uk>)



Access Guide

Introduction

- Services / facilities within the building include the Great Hall, Reception Room, Old Council Chamber, Lecture Theatres, other general teaching and function rooms, Earth Sciences - teaching rooms and labs, the Law School - teaching rooms and the Wills Memorial Library.

Opening Times

- Monday 07:00 - 22:00.
- Tuesday 07:00 - 22:00.
- Wednesday 07:00 - 22:00.
- Thursday 07:00 - 22:00.

- Friday 07:00 - 22:00.
- Saturday Closed.
- Sunday Closed.

Getting Here

By Road

[View](#)

- The University of Bristol campus is located in the St Michael's Hill area of Bristol, in the centre of the City.

The campus can be reached by using the M32 from the M4 and M5. Exit the M4 at junction 19, signed for the M32 and follow the M32 southwest into Bristol.

Continue onto the A4032, and continue straight on to the A4044 (Bond Street).

At St James Barton Roundabout take the 2nd exit, onto Marlborough Street (B4051).

Continue to follow Marlborough Street, passing Bristol Royal Infirmary and Bristol Royal Hospital for Children.

Take the left hand lane and continue straight ahead at the traffic lights.

Continue along Park Row, and turn right onto Woodland Road.

Proceed up the hill to the crossroads.

At the crossroads turn right onto Tyndall Avenue, at the centre of the campus.

- Parking in building car parks is by permit only. Blue Badge holders require a permit to park in university car parks.

On-street parking and public car parks are available in the St Michael's Hill area. On-street parking is time limited, however Blue Badge holders are not subject to any charges of time limits.

By Bus

[View](#)

- The 9 and 72 bus services from Bristol Temple Meads train station run a combined frequency of every 15 minutes at peak times and stop at Tyndall Avenue on the University campus. The journey takes approximately 20-30 minutes.

The number 8 service from Bristol Temple Meads train station runs at least every 10 minutes at peak times and stops by The Berkeley pub on Queen's Road opposite the Wills Memorial Building before heading towards the Richmond Building (Students' Union) and Clifton village.

The journey takes approximately 20-30 minutes.

The 1, 2, 3 and 4 and the One bus services all stop in the Park Street, Triangle, Whiteladies Road area, a couple of minutes walk from the University.

The Bristol Unibus service connects the Stoke Bishop halls of residences with the University campus and city centre.

By Train

[View](#)

- The nearest mainline station to the University is Bristol Temple Meads. Buses and taxis are available from the station to the campus. Bristol Temple Meads is served by CrossCountry, GWR, and South Western Railway.
The nearest local train station is Clifton Down. There are no direct buses from the station to the campus. Clifton Down is served by GWR.

Useful Links

[View](#)

- University Parking Information.
- [To view the web page described above click here \(opens in new tab\)](http://www.bristol.ac.uk/transportplan/car-parking/precinct/) (<http://www.bristol.ac.uk/transportplan/car-parking/precinct/>).
- FirstGroup Bristol Route Map.
- [To view the web page described above click here \(opens in new tab\)](http://www.firstgroup.com/ukbus/bristol_bath/journey_planning/maps/bristol.php) (http://www.firstgroup.com/ukbus/bristol_bath/journey_planning/maps/bristol.php).
- National Rail Enquiries Bristol Temple Meads.
- [To view the web page described above click here \(opens in new tab\)](http://www.nationalrail.co.uk/stations_destinations/BRI.aspx) (http://www.nationalrail.co.uk/stations_destinations/BRI.aspx).

Useful Information

- [To see more information on Disability Services please click here \(opens new tab\)](http://www.bristol.ac.uk/disability-services/) (<http://www.bristol.ac.uk/disability-services/>).
- Telephone Number: 0117 331 0444.
- Email: disability-services@bristol.ac.uk.
- [To see more information on Study Support please click here \(opens new tab\)](http://www.bristol.ac.uk/students/study/) (<http://www.bristol.ac.uk/students/study/>).

- [To see more information on Health and Wellbeing please click here \(opens new tab\)](http://www.bristol.ac.uk/students/wellbeing/) (http://www.bristol.ac.uk/students/wellbeing/).
- [To see more information on Accommodation please click here \(opens new tab\)](http://www.bristol.ac.uk/students/accommodation/) (http://www.bristol.ac.uk/students/accommodation/).
- Telephone Number: 0117 954 6640.
- Email: accom-office@bristol.ac.uk.
- [To see more information on Parking at Residences please click here \(opens new tab\)](http://www.bristol.ac.uk/accommodation/parking/) (http://www.bristol.ac.uk/accommodation/parking/).

Building Parking

Photos



1



2



3



4

-
- The building does not have its own dedicated parking.

Public Car Parks

[View](#)

- There is not a car park for public use within 200m (approx).
- Clearly signed and / or standard marked parking bays are available.
- The on street standard parking bay(s) is/are located on Park Row, Park Street and Berkeley Avenue.

Drop Off Point

[View](#)

- There is not a designated drop off point.

Comments

[View](#)

- On-street parking is limited to 2 hours between 09:00 and 18:00.
- Parking restrictions do not apply to Blue Badge holders.

Outside Access (Main Entrance)

Photos



1



2



3



4

Entrance

View

- This information is for the entrance located at the front of the building, on Queen's Road.
- There is stepped access at this entrance.
- There is a canopy or recess which provides weather protection at this entrance.
- The main door(s) open(s) away from you (push).
- The door(s) is / are double.
- The door(s) is / are permanently held open (at the time of the survey).
- The width of the door opening is 305cm (10ft).
- There is a second set of doors.
- The door(s) open(s) away from you (push).
- The door(s) is / are double.
- The door(s) is / are heavy.
- The width of the door opening is 259cm (8ft 6in).

Step(s)

View

- There is a / are step(s) at this entrance.
- The step(s) is / are located in front of the entrance.
- There is / are 7 step(s) to access the entrance.
- There is not tactile paving at the top and bottom of the step(s).
- The step(s) is / are not clearly marked.
- The step(s) is / are medium (11cm - 17cm).

- The steps do not have handrails.

Outside Access (Ramped Entrance)

Photos



1



2



3

Entrance

[View](#)

- This information is for the entrance located at the front of the building, on Park Street.
- There is ramped/sloped access at this entrance.
- There is a bell/buzzer.
- The height of the bell/buzzer is 87cm (2ft 10in).
- A UCard is required for access at this entrance.
- The height of the card reader/lock is 133cm (4ft 4in).
- There is not a canopy or recess which provides weather protection at this entrance.
- The main door(s) open(s) automatically (towards you).
- The door(s) is / are double (with one leaf locked).
- The width of the door opening is 100cm (3ft 3in).

Ramp/Slope

[View](#)

- There is a ramp/slope at this entrance.
- The ramp/slope is located in front of the entrance.
- The ramp/slope gradient is steep.

Reception (Reception Desk and Information)

Photos



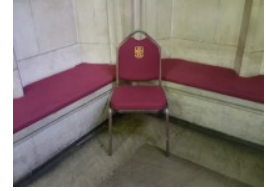
1



2



3



4

- Reception and Information Desk is located to the right as you enter via the ramped entrance.
- The desk is 14m (15yd 11in) from the ramped entrance.
- Clear signage for the reception area is not visible from the entrance.
- There is step free access to this reception area.
- The lighting levels in the reception area are medium.
- The reception desk/counter is low (76cm or lower).
- There is not a clear knee recess beneath the low/lowered counter.
- The desk is staffed.
- There is not a hearing assistance system.

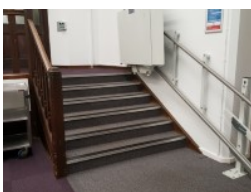
Comments

[View](#)

- This desk is located just inside the main entrance, next to the Estates Assistants' Lodge.
- There is seating in the lobby area around the Reception and Information Desk.
- The seating does not have armrests.

Getting Around (Ground Floor)

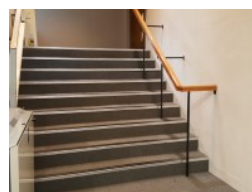
Photos



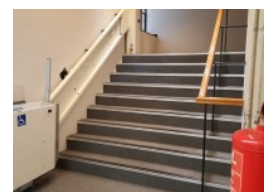
1



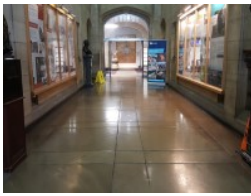
2



3



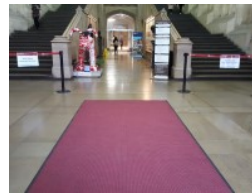
4



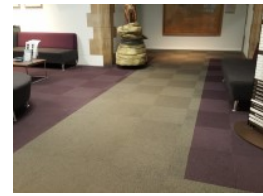
5



6



7



8

Access

[View](#)

- There is step free access throughout the majority of the building, via lift.
- There is/are 6 clearly marked step(s), with a handrail on the left going up, for access to Earth Science Labs G27 - G47.
- The step(s) is/are medium (11cm - 17cm).
- These steps are located on the ground floor, at the rear right of the building and are shown in photographs 1 and 2.
There is a platform lift to overcome these steps.
Please see the lift section for more information.
- There is/are 9 clearly marked step(s), with a handrail on the right going up, for access to the Lewis Wing.
- The step(s) is/are deep (18cm+).
- These steps are located on the ground floor, at the rear right of the building and give access to the Lewis Wing and are shown in photographs 3 and 4.
There is a platform lift to overcome these steps.
Please see the lift section for more information.
- There are doors in corridors which have to be opened manually.

Getting Around

[View](#)

- There is clear signage for building facilities/areas in the foyer/reception area.
- There is clearly written directional signage at key points of circulation routes.
- There is some flooring in corridors which is shiny and could cause issues with glare or look slippery to some people.
- There is some flooring in corridors which includes patterns or colours which could be confusing or look like steps or holes to some people.

- There is good colour contrast between the walls and floor in the majority of corridors.
- The lighting levels are varied.
- This building does not play background music.
- There is a hearing assistance system.
- The system is a fixed loop.
- There is a fixed hearing loop in the S.H. Reynolds Lecture Theatre.
- Staff are trained to use the hearing system.

Reception (School of Earth Sciences School Office)

Photos



1



2

-
- School of Earth Sciences School Office is located on the ground floor, at the beginning of the main corridor on the right.
 - The desk is 32m (34yd 2ft) from the ramped entrance.
 - Clear signage for the reception area is not visible from the entrance.
 - There is step free access to this reception area.
 - The lighting levels in the reception area are medium.
 - The reception desk/counter is medium height (77cm - 109cm).
 - There is not a low section of the counter (76cm or below) available.
 - The desk is staffed.
 - There is not a hearing assistance system.

Lift (Earth Science Labs G27 - G47 Platform Lift)

Photos



1



2

-
- There is a lift for public use.
 - The lift is located on the ground floor, at the rear right of building.
 - The lift is a platform lift.
 - The platform lift accesses a small level change.
 - The weight limit for the lift is 225kg.
 - The lift is approximately 57m (62yd 1ft) from the ramped entrance.
 - Staff do need to be notified for use of the lift.
 - The dimensions of the lift are 90cm x 80cm (2ft 11in x 2ft 7in).
 - The controls for the lift are within 90cm - 120cm from the floor.
 - The lighting level in the lift is medium.

Comments

[View](#)

- This lift is used to bypass the stairs mentioned in level change 1, in the ground floor getting around section.

Lift (Ground Floor Lewis Wing Platform Lift)

Photos



1



2

-
- There is a lift for public use.

- The lift is located on the ground floor, in the corridor to the rear right of the building.
- The lift is a platform lift.
- The platform lift accesses a small level change.
- The weight limit for the lift is 225kg.
- The lift is approximately 54m (59yd 2in) from the ramped entrance.
- Staff do need to be notified for use of the lift.
- The dimensions of the lift are 90cm x 80cm (2ft 11in x 2ft 7in).
- The controls for the lift are within 90cm - 120cm from the floor.
- The lighting level in the lift is medium.

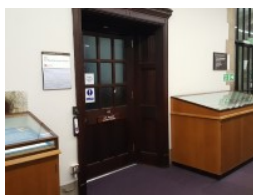
Comments

[View](#)

- This lift is used to bypass the stairs mentioned in level change 2 in the ground floor getting around section.

Lecture Theatre(s) (S.H. Reynolds Lecture Theatre)

Photos



1



2



3



4



5



6

-
- Directional and locational signage for the lecture theatre(s) is available in upper and lower case lettering that is clearly visible.

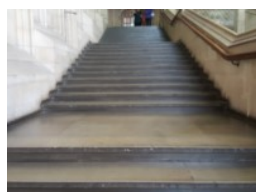
- The corridor outside the lecture theatre(s) is sufficiently wide enough (150cm+) to allow wheelchair users to pass.
- There is step free access into the lecture theatre(s).
- The door opening width(s) is/are 75cm+ for the lecture theatre(s).
- The door(s) for the lecture theatre(s) is/are push pad activated.
- There are not designated spaces for wheelchair users within the lecture theatre(s).
- There is space for an assistance dog.
- There is step free access to the speaker's area at the front of the lecture theatre(s).
- The height of the speaker's desk/table is 93cm.
- The speaker's desk/table is not height adjustable.
- There is not staggered seating within the lecture theatre(s).
- The steps to the staggered seating do not have handrails.
- There is a hearing assistance system for the lecture theatre(s).
- There is not a visual fire alarm beacon in the lecture theatre(s).
- There is fixed furniture within the lecture theatre(s).
- The clear floor space beneath tables in the room(s) is 74cm.
- A height adjustable table/bench is not available.
- There are no chairs with armrests on both sides within the lecture theatre(s).
- There is sufficient space for a wheelchair user to manoeuvre within the lecture theatre(s).
- Floor coverings in the lecture theatre(s) are even with no trip hazards.

Other Floors (Ground to First Floor)

Photos



1



2

Steps

View

- The floors which are accessible by stairs are G and 1.
- The stairs are located in the entrance foyer, through the corridor to the right as you enter via the ramped entrance.
- The stairs are approximately 17m from the ramped entrance.
- There are 15+ steps between floors.
- The lighting levels are medium.
- The steps are not clearly marked.
- The steps are medium (11cm - 17cm).
- The steps do have handrails.
- The steps have a handrail on the right going up.
- There is a landing.

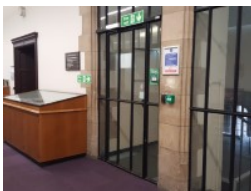
Comments

View

- There are 2 staircases in this area.
- The staircase on the left has a handrail on the right going up.
- The staircase on the right has a handrail on the left going up.

Other Floors (Rear Right Stairs)

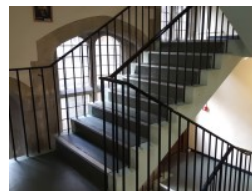
Photos



1



2



3



4

Steps

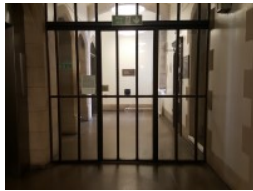
View

- The floors which are accessible by stairs are G, 1, 2 and 3.
- The stairs are located at the rear right of the building as you enter via the ramped entrance.

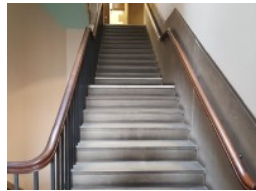
- The stairs are approximately 51m from the ramped entrance.
- There are 15+ steps between floors.
- There are manual, heavy, single doors to access the stairwell on all floors.
- The lighting levels are medium.
- The steps are clearly marked.
- The steps are medium (11cm - 17cm).
- The steps do have handrails.
- The steps have a handrail on both sides.
- There is a landing.

Other Floors (Rear Left Stairs)

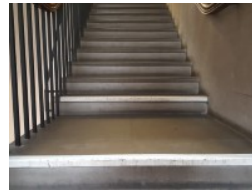
Photos



1



2



3

Steps

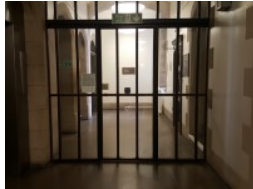
[View](#)

- The floors which are accessible by stairs are 1, 2, 3, 4 and 5.
- The stairs are located at the rear left of the building from the first floor upwards.
- The stairs are approximately 5m from the main lift.
- There are 15+ steps between floors.
- There are manual, heavy, single doors to access the stairwell on all floors.
- The lighting levels are medium.
- The steps are not clearly marked.
- The steps are medium (11cm - 17cm).
- The steps do have handrails.

- The steps have a handrail on both sides.
- There is a landing.

Lift (Main Lift)

Photos



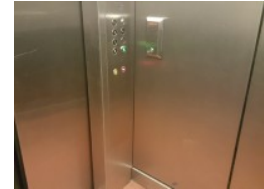
1



2



3



4

-
- There is a lift for public use.
 - The lift is located towards the rear left of the building as you enter via the ramped entrance.
 - The lift is a standard lift.
 - The floors which are accessible by this lift are G, 1, 2, 3, 4 and 5.
 - Wall mounted information boards are not provided at lift landings.
 - The weight limit for the lift is 1000kg.
 - The lift is approximately 33m (36yd 3in) from the ramped entrance.
 - Staff do not need to be notified for use of the lift.
 - The clear door width is 94cm (3ft 1in).
 - The dimensions of the lift are 152cm x 136cm (4ft 12in x 4ft 6in).
 - There are not separate entry and exit doors in the lift.
 - There is not a mirror to aid reversing out of the lift.
 - The lift does have a visual floor indicator.
 - The lift does have an audible announcer.
 - The lift does have a hearing loop system.
 - The lift does not have Braille markings.
 - The lift does have tactile markings.
 - The controls for the lift are within 90cm - 120cm from the floor.
 - The lighting level in the lift is medium.

Getting Around (First Floor)

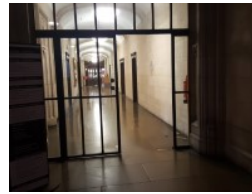
Photos



1



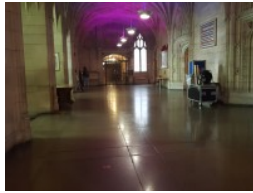
2



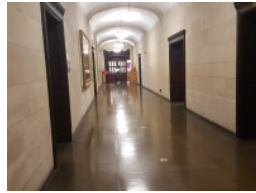
3



4



5



6

Access

[View](#)

- There is step free access throughout the first floor.
- There is/are 9 unmarked step(s), with a handrail on the right going up, for access to Earth Sciences Rooms M and N.
- The step(s) is/are deep (18cm+).
- There is a platform lift which overcomes the steps.
- These steps are located in the corridor to the left hand side of the Great Hall, opposite the main lift as you exit and are shown in photographs 1 and 2.
- There are doors in corridors which have to be opened manually.

Getting Around

[View](#)

- There is clear signage for building facilities/areas in the foyer/reception area.
- There is clearly written directional signage at key points of circulation routes.
- There is flooring in corridors which is shiny and could cause issues with glare or look slippery to some people.
- There is good colour contrast between the walls and floor in the majority of corridors.

- The lighting levels are varied.
- This building does not play background music.
- There is a hearing assistance system.
- The system is a fixed loop.
- There is a fixed loop in the Old Council Chamber and Seminar Room 1.5.
- Staff are trained to use the hearing system.

Lift (First Floor to Earth Sciences Rooms M and N)

Photos



1



2

-
- There is a lift for public use.
 - The lift is located on the first floor, along the corridor to the left hand side of the Great Hall, opposite the main lift as you exit.
 - The lift is a platform lift.
 - The platform lift accesses a small level change.
 - The lift is approximately 21m (22yd 2ft) from the main lift.
 - Staff do not need to be notified for use of the lift.
 - The clear door width is 91cm (2ft 12in).
 - The dimensions of the lift are 91cm x 102cm (2ft 12in x 3ft 4in).
 - The lift does not have Braille markings.
 - The lift does not have tactile markings.
 - The controls for the lift are within 90cm - 120cm from the floor.
 - The lighting level in the lift is medium.

Lecture Theatre(s) (Great Hall)

Photos



1



2



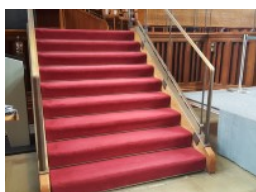
3



4



5



6

-
- Directional and locational signage for the lecture theatre(s) is available in upper and lower case lettering that is clearly visible.
 - The corridor outside the lecture theatre(s) is sufficiently wide enough (150cm+) to allow wheelchair users to pass.
 - There is step free access into the lecture theatre(s).
 - The door opening width(s) is/are 75cm+ for the lecture theatre(s).
 - The door(s) for the lecture theatre(s) is/are not push pad activated.
 - There is space for an assistance dog.
 - There is step free access to the speaker's area at the front of the lecture theatre(s).
 - The height of the lectern is 120cm.
 - The lectern is not height adjustable.
 - There is not staggered seating within the lecture theatre(s).
 - There is not a hearing assistance system for the lecture theatre(s).
 - There is not a visual fire alarm beacon in the lecture theatre(s).
 - There is not fixed furniture within the lecture theatre(s).
 - There are no chairs with armrests on both sides within the lecture theatre(s).
 - There is sufficient space for a wheelchair user to manoeuvre within the lecture theatre(s).
 - Floor coverings in the lecture theatre(s) are even with no trip hazards.

- The seating is flexible and room can be created for wheelchair users.

Comments

[View](#)

- There is a raised platform at the front of the Great Hall.
- There are seats with armrests on the raised platform.
- There are 9 medium height steps to access the platform.
- The steps are not clearly marked.
- The steps have handrails on both sides.

Reception (Library Reception)

Photos



1



2



3

-
- Library Reception is located on the first floor, to the far right hand side of the building as you exit the main lift, to the left as you enter the library.
 - The desk is 46m (50yd 11in) from the main lift.
 - Clear signage for the reception area is not visible from the entrance.
 - There is step free access to this reception area, via lift.
 - The lighting levels in the reception area are medium.
 - The reception desk/counter is low (76cm or lower).
 - There is not a clear knee recess beneath the low/lowered counter.
 - The desk is staffed.
 - There is a hearing assistance system.
 - The type of system is a fixed loop.
 - The hearing assistance system is signed.
 - Staff are trained to use the hearing system.

Comments

[View](#)

- There are security barriers next to the desk to enter the library.
- The width of the entry barriers is 90cm.
- There are also barriers to exit the library.
- The width of the exit barriers is 100cm.

Library (Wills Memorial Library)

Photos



1



2



3



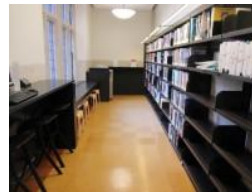
4



5



6



7



8

- This library does not have a regular supply of books in Braille.
- This library does not have a regular supply of books in large print.
- This library does not have a regular supply of books in audio format.
- There is an ordering service.
- The library does not have computers with accessible software.
- Auxiliary aids are available for computer users.
- A height adjustable chair is / are available.

Comments

[View](#)

- Assistive Software available includes Inspiration, Read and Write GOLD and MindView.

- Other software and auxiliary aids can be made available via the Library Dyslexia and Disability Team. Staff and students requiring these services need to register with the team.
- There are self-issue and self-return machines in the library.
- The height to the top of the touchscreen is 153cm.
- The height to the UCard reader is 120cm.
- The height to the book shelf is 85cm.
- There is a book deposit box.
- The height to the slot is 79cm.

Other Floors (Library)

Photos



1



2



3



4

Steps

View

- The floors which are accessible by stairs are 1, 2.
- The stairs are located at the far right hand side of the building, in the bookroom to the right as you enter the library.
- The stairs are approximately 53m from the main lift.
- There are 14 steps between floors.
- The lighting levels are medium.
- The steps are clearly marked.
- The steps are deep (18cm+).
- The steps do have handrails.
- The steps have a handrail on both sides.
- There is not a landing.

Other

[View](#)

- The area(s)/service(s) on the floors which are not accessible is/are journals and some law books.

Getting Around (Second Floor)

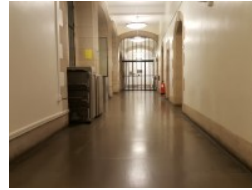
Photos



1



2



3



4

Access

[View](#)

- There is step free access throughout the second floor.
- There is/are 10+ clearly marked step(s), with a handrail on the left going up, for access to the right hand side of the second floor as you exit the main lift.
- The step(s) is/are medium height (11cm - 17cm).
- There is a platform lift which overcomes the steps.
- There is a handrail on the right going up for the first 4 steps. There is a handrail on the left going up for the remaining steps.
- There are doors in corridors which have to be opened manually.

Getting Around

[View](#)

- There is clear signage for building facilities/areas in the foyer/reception area.
- There is clearly written directional signage at key points of circulation routes.
- There is flooring in corridors which is shiny and could cause issues with glare or look slippery to some people.
- There is good colour contrast between the walls and floor in the majority of corridors.

- The lighting levels are varied.
- This building does not play background music.

Lift (Second Floor Platform Lift)

Photos



1



2

-
- There is a lift for public use.
 - The lift is located on the second floor, along the corridor to the right as you exit the main lift.
 - The lift is a platform lift.
 - The platform lift accesses a small level change.
 - The lift is approximately 11m (12yd 1in) from the main lift.
 - Staff do need to be notified for use of the lift.
 - The clear door width is 77cm (2ft 6in).
 - The dimensions of the lift are 77cm x 80cm (2ft 6in x 2ft 7in).
 - The lift does have Braille markings.
 - The lift does not have tactile markings.
 - The controls for the lift are within 90cm - 120cm from the floor.
 - The lighting level in the lift is medium.

Comments

[View](#)

- This lift is used to bypass the stairs mentioned in level change 1 in the second floor getting around section.
- There is a set of 4 steps covered by 1 platform lift.
- There is a set of 7 steps covered by a second identical platform lift.

Getting Around (Third Floor, Fourth Floor, Fifth Floor and Sixth Floor)

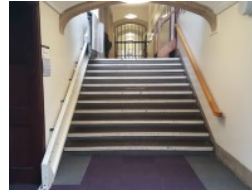
Photos



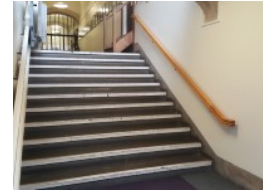
1



2



3



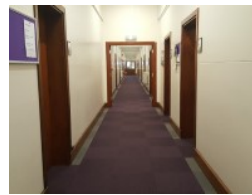
4



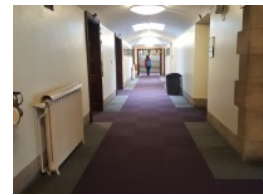
5



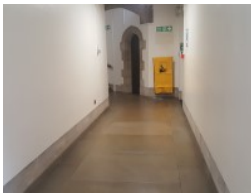
6



7



8



9



10



11



12

- There is/are 2 unmarked step(s), with handrails on both sides, for access to Room 3.27.
- The step(s) is/are deep (18cm+).
- The steps in level change 1 are shown in photographs 1 and 2.
- There is/are 10+ clearly marked step(s), with a handrail on the right going up, for access to all rooms from 3.28 onwards, in the corridor to the right as you exit the main lift.
- The step(s) is/are medium (11cm - 17cm).
- There is a platform lift which overcomes the steps.
- The steps in level change 2 are shown in photographs 3 and 4.
- There is/are 8 clearly marked step(s), with no handrails, for access to Staff Offices 3.34 - 3.38 and 3.40 - 3.63.
- The step(s) is/are medium (11cm - 17cm).
- The first 4 steps only can be overcome by a platform lift. The first 4 steps give access to Staff Offices 3.40 - 3.63.

The second set of 4 steps leading to Staff Offices 3.34 - 3.38 cannot be overcome by a lift.

The steps in level change 3 are shown in photographs 5 and 6.

- There are doors in corridors which have to be opened manually.

Getting Around

[View](#)

- There is clear signage for building facilities/areas in the foyer/reception area.
- There is clearly written directional signage at key points of circulation routes.
- There is some flooring in corridors which is shiny and could cause issues with glare or look slippery to some people.
- There is good colour contrast between the walls and floor in the majority of corridors.
- The lighting levels are varied.
- This building does not play background music.
- There is a hearing assistance system.
- The system is a fixed loop.
- There are fixed loops in Lecture rooms 3.32 and 3.30, the Coutts Lecture Theatre and seminar room 5.68.
- Staff are trained to use the hearing system.

Lift (Staff Offices 3.40 - 3.63)

Photos



1



2

-
- There is a lift for public use.
 - The lift is located at the very far right of the main corridor as you exit the main lift.

- The lift is a platform lift.
- The platform lift accesses a small level change.
- The lift is approximately 17m (18yd 1ft) from the 3.30 Lecture Theatre Platform Lift.
- Staff do not need to be notified for use of the lift.
- The clear door width is 78cm (2ft 7in).
- The dimensions of the lift are 80cm x 78cm (2ft 7in x 2ft 7in).
- The lift does not have Braille markings.
- The lift does not have tactile markings.
- The controls for the lift are within 90cm - 120cm from the floor.
- The lighting level in the lift is medium.

Lift (3.30 Lecture Theatre Platform Lift)

Photos



1



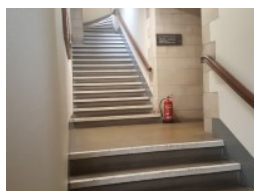
2

-
- There is a lift for public use.
 - The lift is located on the third floor, along the corridor to the right as you exit the main lift, leading to rooms 3.28 onwards.
 - The lift is a platform lift.
 - The platform lift accesses a small level change.
 - The lift is approximately 10m (10yd 2ft) from the main lift.
 - Staff do not need to be notified for use of the lift.
 - The clear door width is 78cm (2ft 7in).
 - The dimensions of the lift are 80cm x 78cm (2ft 7in x 2ft 7in).
 - The lift does not have Braille markings.
 - The lift does not have tactile markings.
 - The controls for the lift are within 90cm - 120cm from the floor.

- The lighting level in the lift is medium.

Other Floors (Fifth to Sixth Floor)

Photos



1



2

Steps

[View](#)

- The floors which are accessible by stairs are 5 and 6.
- The stairs are located in the corridor to the right as you exit the main lift, just beyond the Postgraduate Learning Resource Centre.
- The stairs are approximately 13m from the main lift.
- There are 15+ steps between floors.
- There are manual, heavy, double doors to access the stairwell on the sixth floor.
- The lighting levels are medium.
- The steps are clearly marked.
- The steps are medium (11cm - 17cm).
- The steps do have handrails.
- The steps have a handrail on the right going up.
- There is a landing.

Other

[View](#)

- The area(s)/service(s) on the floors which are not accessible is/are all rooms on the 6th floor and rooms 5.70 - 5.74.

Comments

[View](#)

- The stairs are on a spiral twist.

Accessible Toilet

Photos



1



2

-
- Accessible toilet facilities are available.

Location and Access

[View](#)

- The toilet is not for the sole use of disabled people.
- There is no signage on or near the toilet door.
- This accessible toilet is approximately 4m (4yd 1ft) from the main lift.
- This accessible toilet is located on the second floor, to the left as you exit the main lift.
- There is level access to this accessible toilet.
- This is by lift.

Features and Dimensions

[View](#)

- This is a shared toilet.
- A key is not required for the accessible toilet.
- The door opens outwards.
- The door is locked by a sliding bolt.
- The width of the accessible toilet door is 76cm (2ft 6in).
- The door is heavy.
- The dimensions of the accessible toilet are 165cm x 194cm (5ft 5in x 6ft 4in).
- There is not a clear 150cm x 150cm manoeuvring space in the accessible toilet.
- There is a lateral transfer space.

- As you face the toilet pan the transfer space is on the right.
- The lateral transfer space is 91cm (2ft 12in).
- There is a dropdown rail on the transfer side.
- There is a flush on the transfer side.
- The tap type is lever.
- There is a mixer tap.
- There is not an emergency pull cord alarm in the cubicle.
- Disposal facilities are available in the cubicle.
- There is a/are female sanitary and open waste paper bin disposal units.
- There is not a/are not coat hook(s).

Position of Fixtures

View

- Wall mounted grab rails are available for the toilet.
- As you face the toilet the wall-mounted grab rails are on both sides.
- There is a shelf within the accessible toilet.
- The shelf is higher than 95cm (3ft 1in).
- There is a mirror.
- Mirrors are not placed at a lower level or at an angle for ease of use.
- The height of the toilet seat above floor level is 45cm (1ft 6in).
- There is a hand dryer.
- The hand dryer cannot be reached from seated on the toilet.
- The hand dryer is not placed higher than 100cm (3ft 3in).
- There is not a towel dispenser.
- There is a toilet roll holder.
- The toilet roll holder can be reached from seated on the toilet.
- The toilet roll holder is not placed higher than 100cm (3ft 3in).
- There is a wash basin.
- The wash basin cannot be reached from seated on the toilet.
- The wash basin is not placed higher than 74cm (2ft 5in).
- There is not a soap dispenser.

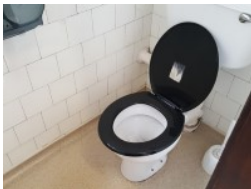
Colour Contrast and Lighting

[View](#)

- The contrast between the internal door and wall is good.
- The contrast between the external door and wall is good.
- The contrast between the wall-mounted grab rail(s) and wall is poor.
- The contrast between the dropdown rail(s) and wall is poor.
- The toilet seat colour contrast is poor.
- The contrast between the walls and floor is fair.
- The lighting levels are medium.

Standard Toilet(s)

Photos



1



2

Location of Standard Toilet(s)

[View](#)

- There are male and female standard toilets facilities on the second floor, the third floor, the fourth floor and the fifth floor.

Standard Toilet Surveyed

[View](#)

- A male standard toilet was surveyed.
- The toilet surveyed is located on the second floor, ahead as you exit the main lift.
- There is step free access to the standard toilet(s) surveyed from the entrance.
- The standard toilet surveyed is approximately 3m from the main lift.
- There is not a/are not cubicle(s) suitable for ambulant disabled people in the standard toilet(s) surveyed.

- Lighting levels in the standard toilet surveyed are good.