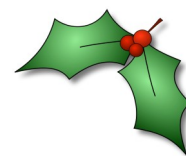


Teaching and Learning for Health Professionals



December 2010

BEF Recruitment Event - we called, you came!

Ideas brought, pizza eaten, research initiated...

News in brief:

- **BEF Research Recruitment Event**
- **Fast track 2011 in Bath and Taunton**
- **TLHP course developments**
- **New TLHP admin team**
- **TLHP Alumni seminars**

www.medicis.bris.ac.uk/tlhp/
tlhp-office@bris.ac.uk

0117 33 11869

Lecturers:

Stephen Greenwood

Ellayne Fowler

Tricia Thorpe

Simon Atkinson



By the end of the evening of 4 November, a new era had dawned over research into Medical Education in Bristol. To paraphrase a former US Defence Secretary, we ended with some known knowns, as well as uncovering a few known unknowns.

If you missed this event, we are aiming to increase the amount of medical education research we undertake in the region, with the goal of producing more journal papers and conference contributions over the next year or two.

Over 40 interested parties met at Dolphin House, deep in the BRI, to bring their research ideas to the table and find like-minded supporters and co-authors. Many people discovered that others had similar en-

thusiasms to their own, and were able to join forces or contribute to each others' projects. We also found that simply discussing ideas was an invaluable way to make progress in clarifying the purpose



An irresistible call to action...

and direction of our research. The Bristol Expeditionary Force (BEF) is especially interested in supporting those without long research experience, and we were delighted to see so many of our MBChB undergraduates at-

tending the event. Their ideas and energy will prove invaluable to the success of the project, and we really hope that the 'older hands' amongst us will enjoy the input and insights of the next generation!

Over 15 projects resulted from the evening, in areas ranging from simulation and empathy to active learning and long case assessment. We'd warmly welcome further input however, and membership remains open to all who are interested. If that's you, then please email tlhp-office@bris.ac.uk and we will add you to the mailing list. We will be running a drop in evening session in January ahead of the AMEE and ASME deadlines to help you lick your abstracts into shape: hope to see some of you there.

Fast Track Flyers are taking an early Bath in Taunton...

The first TLHP Fast Track participants, are now more than half way through the Certificate being delivered in Bath. The chance to work with the same group of people across all modules in one year was a fantastic opportunity for tutors and learners: some students even travel from as far afield as Birmingham and Truro to join us at the RUH! We think this speaks volumes about the quality of the Fast Track experience and the unique way in which TLHP students

develop over the period of the course.



Express Medical Education?

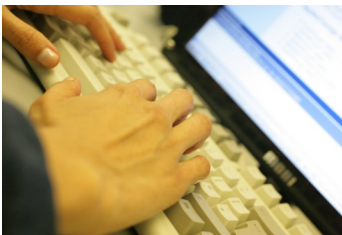
The intensity of completing the certificate in 12 months has led to some interesting elements of course development which will almost certainly spin out into the more

flexible programme. Ellayne has really enjoyed being the principal tutor with 'best supporting actress' award going to Tricia. Ellayne is reporting on the 'blogging' element of the FT course in an internal seminar next year.

There will be another Bath cohort starting in April 2011 and a new one in Taunton from September 2011. We still have a few spaces left on both courses - please let your colleagues know!



Changing the way we deliver the TLHP programme - blending talk with technology...



TLHP Course Developments

You'll be noticing some changes in the way the course is delivered over the coming year or two.

We're also making some shifts in the responsibilities we all hold: Tricia will be co-ordinating the Certificate programme, whilst Stephen and Ellayne will manage the Diploma and MSc as well as developing some new and innovative modules in response to ever increasing numbers. Simon will continue to look after CPD in the Acad-

emies as well as taking overall responsibility for the TLHP programme.

There are new course developments afoot too: we're looking at introducing an online option to some modules from September 2011, as well as new ways of assessing your work, including video papers, blogs and presentations. There'll also be some new Diploma modules, including a pathway aimed at Management and Leadership in Medical Education:

watch this space for further news in the very near future.

Naturally we always try to respond to your own suggestions for development: we've introduced more interactivity to Module 102, updated and expanded handbook reading lists, revised exemplar assignments and added new exemplars for Module 104 as well as changing the way in which we look at learning styles theory in Induction. We do listen, really...

Your new TLHP office team

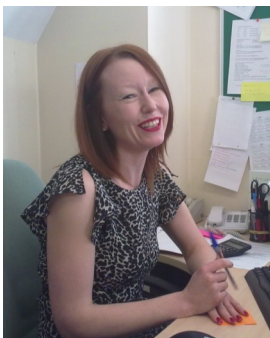
We're delighted to welcome Belinda Arter and Susan Aiers to the TLHP team.

Belinda comes from within the arcane and mystical world of Bristol University, so is well used to the ways of UoB. Previously she worked at the Bristol Colloid Centre in the Department of Chemistry, and brings some marvellous talents to the team, as well as what we're sure you'll agree is a well-developed sense of style. We hope we can maintain her

high standards...

Susan joins us from the NHS, so you can expect admin excellence plus understanding and patience beyond our mortal capabilities. We know you'll find her a real help with your queries and glitches.

Belinda is our new Executive Assistant, normally available from 0830 - 1430 Mon - Fri. Susan is our new Secretarial Assistant, normally available from 0830 - 1630 Tues - Fri.



Belinda Arter, our new Executive Assistant



Susan Aiers, our new Secretarial Assistant

Alumni Events - New Tricks for Old Dogs?

You might have heard of the informal evening seminars we run already, but if not then here's a timely reminder. Our alumni events are open to current as well as past students and take place at 41 St Michaels Hill from 1930 - 2045 with doors open for tea/coffee from 1915.

Our next event is on **16 February** when Dr Martyn



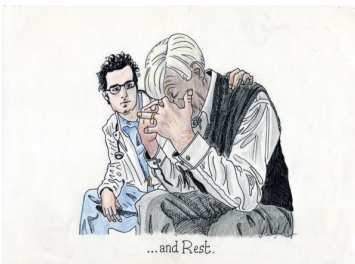
Hewett (left) will talk about the regional mentoring system he has established for new GPs. This topic was the subject of Martyn's MSc research.

Later in 2011 Dr Jessica Watson will present her TLHP conference workshop, **A Walk in the Park**, along with

works of art and literature produced by medical undergraduates and inspired by visits to patients in the Easton com-



munity in which she works.



Touching Patients - student art in response to a clinical placement